

TECHNICAL DATA

ENCLOSURE :-
EX-d AS PER IS/IEC 60079-1:2007

PROTECTION :-
IP-66 AS PER IS 12063-1987 (IS/IEC 60529:2001)

AREA CLASSIFICATION :-
ZONE -1 & 2

TEMPERATURE CLASS :-
T6

GAS GROUPS :-
IIA, IIB & IIC

MATERIAL OF CONSTRUCTION :-
DIE CAST AL. ALLOY LM-6

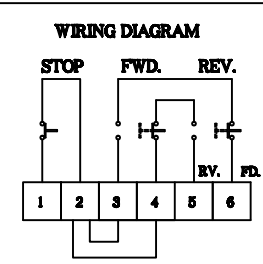
HARDWARE :-
STEEL ZINC PLATED/STAINLESS STEEL

FINISH :-
LIGHT GREY | YELLOW
FOR IIA & IIB | FOR IIC

EARTHING :-
1 NO. INSIDE & 2 NOS. OUTSIDE

CABLE ENTRY :-
3/4"ET - 02NOS.

09. WIRE BUSH	1	GLASSFEEL NYLONE	
08. TERMINAL	A.R.	CLIPON TYPE RAIL MOUNTED	
07. GASKET (ENDLESS, MOULDED)	2	NEOPRENE	
06. CONTACT ELEMENTS (1NO+1NC)	3	-	
05. ACTUATOR GREEN & YELLOW SHROUDED	2	P.P.	
04. ACTUATOR RED-MUSHROOM HEAD	1	P.P.	
03. TERMINAL BOX COVER	1	DIE CAST AL. ALLOY	
02. MAIN BODY COVER	1	CAST AL. ALLOY	
01. BODY	1	DIE CAST AL. ALLOY	
NO.	DESCRIPTION	QTY	MAT./RATING



CLIENT		DRAWN	MBP	DESCRIPTION:- FLP WP CONTROL STATION WITH FOR-REV-STOP PUSH BUTTON		
CONSULTANT		CH'D	MBP			
P.O.No.		APP'D	MBP			
ISSUE	DATE	BY	MODIFICATION	SHT.NO. 1 OF 1	REV. 0	DRG.NO.:- B04



1802/7, G.I.D.C. ESTATE,
V.U.NAGAR 388121. (GUJARAT)